



Frequently Asked Questions

- **Garbage Collection**

The Contractor is required to coordinate all collection for the residents identified on the attached map. Mark your blue and green bins with your address number and bring them to the curb on regular scheduled collection days by 8:00 AM.

- **Contractors Working Hours**

Typical working hours for the Contractor will be 7:30 AM. until 5:00 PM.

- **Water Interruptions**

The Contractor will provide 48-hour notification of planned interruption to your water service. This interruption is typically done during the middle of the day as to not disrupt the homeowner's morning and evening routines.

- **Brunswick Street**

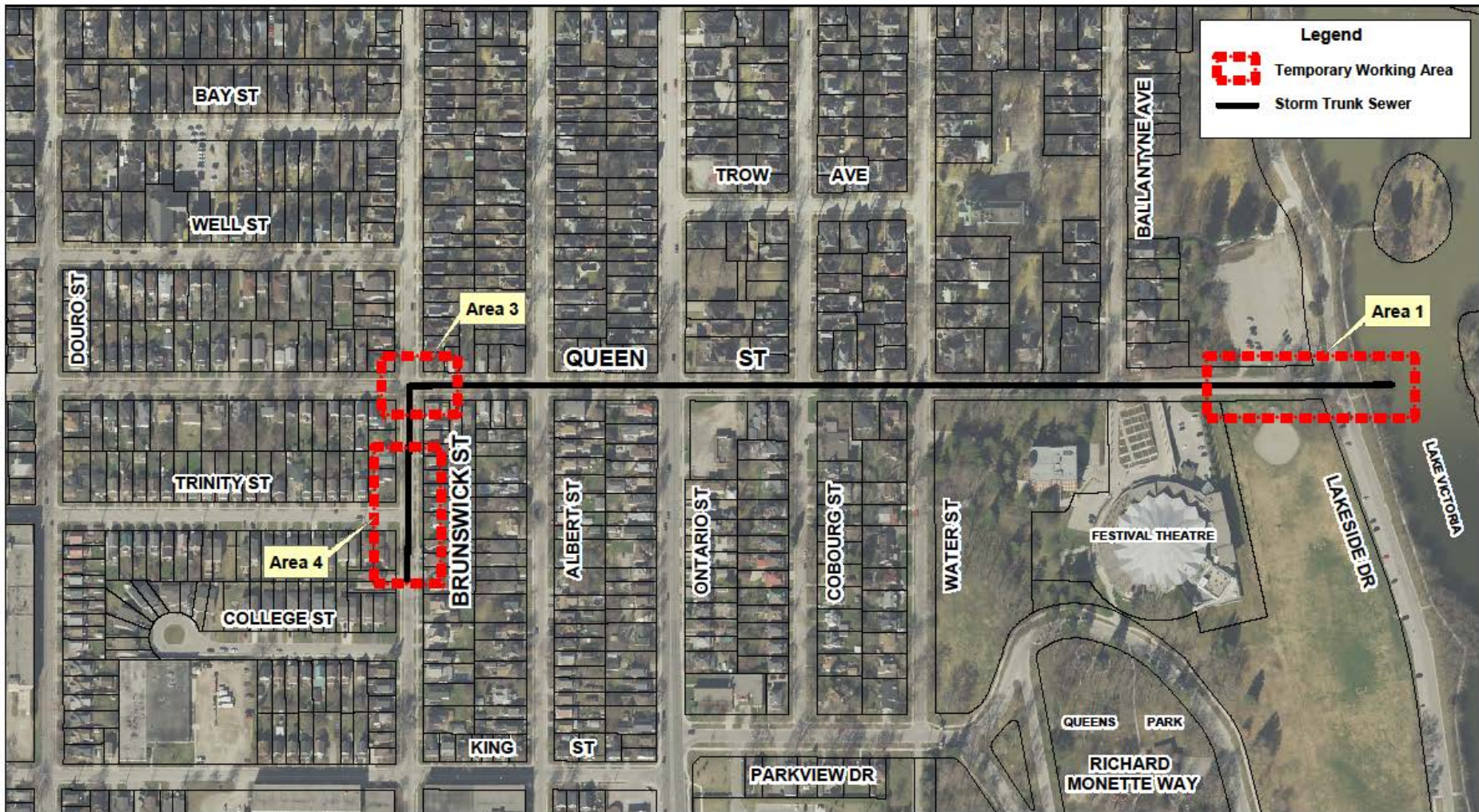
Brunswick Street between King Street and Queen Street will be 2-way for the duration of the project.

- **Community Mailboxes**



Canada Post has temporarily relocated the community mailboxes to College Street. Notification letters were sent out by Canada Post to residents impacted.

- **More Information:**

For more information on the project, visit the City of Stratford's Engineering Departments webpage (<https://www.stratford.ca/en/inside-city-hall/engineeringdivision.aspx>)



Legend

-  Temporary Working Area
-  Storm Trunk Sewer



**Queen Street Major Storm Trunk Sewer
(Lake Victoria to Brunswick/Trinity Major Trunk Storm Sewer)**



City of Stratford
Infrastructure and Development
Services Department
Date: Sept. 15, 2021